

There are a few steps to be able to commission your Puro device via the Puro program.

You must have the Puro program on your computer – you can download it here: <PROGRAM DOWNLOAD>

You will need to make sure your computer can interact with your Puro device, which requires your computer to have a static IP address. To set this up:

Connect your computer to your Puro device with an Ethernet cable.

Plug in your Puro device to an outlet. When properly hooked up, the Puro device will not run a disinfection cycle, but to be safe, please protect yourself by aiming it away from you or keep motion in front of it.

On your computer:

- Go to Network Access
- Click on “Change Adapter Options”
- Right Click on Ethernet Adapter
- Click on Internet Protocol Version 4 (TCP/IPv4)
- Click on Properties
- Click on “Use the following IP address”
- The first IP address should be 192.168.1.2
- Change the Subnet Mask IP address to 255.255.255.0
- Accept changes

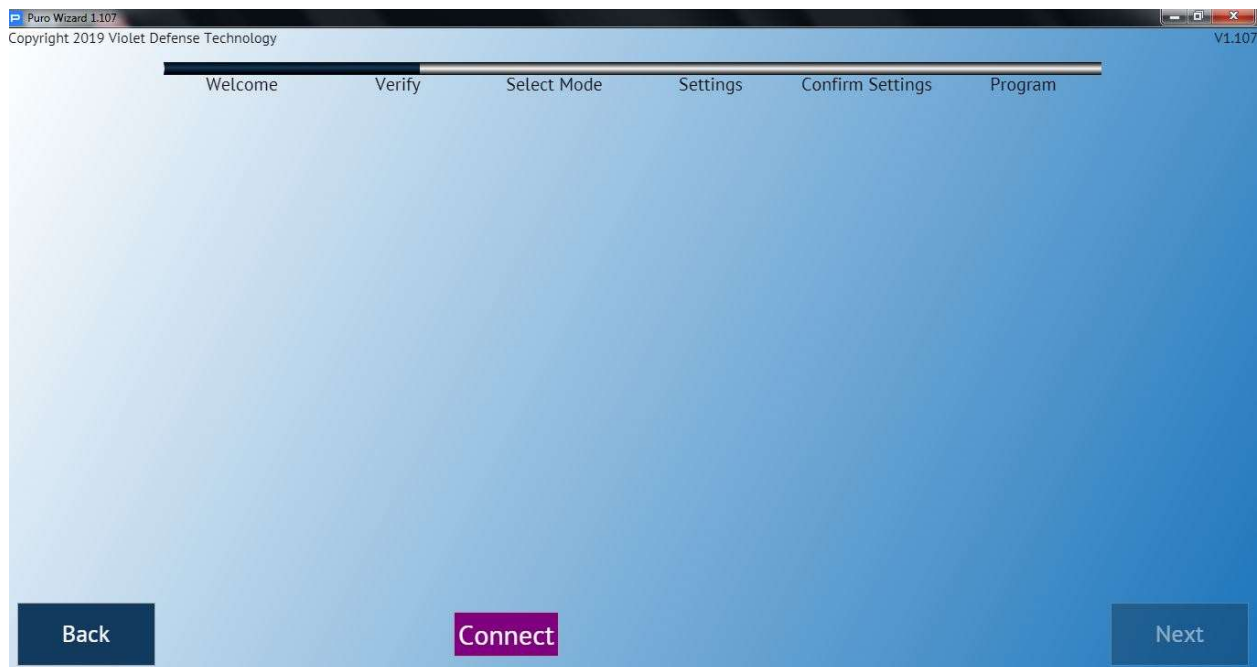
While keeping your computer connected to your Puro unit, and the Puro unit plugged in for power, you should now be able to open the Puro program and connect. If you are having any trouble, please check your firewall settings and make sure the commissioning tool is not being blocked.

MORE INSTRUCTIONS BELOW, DO NOT STOP HERE

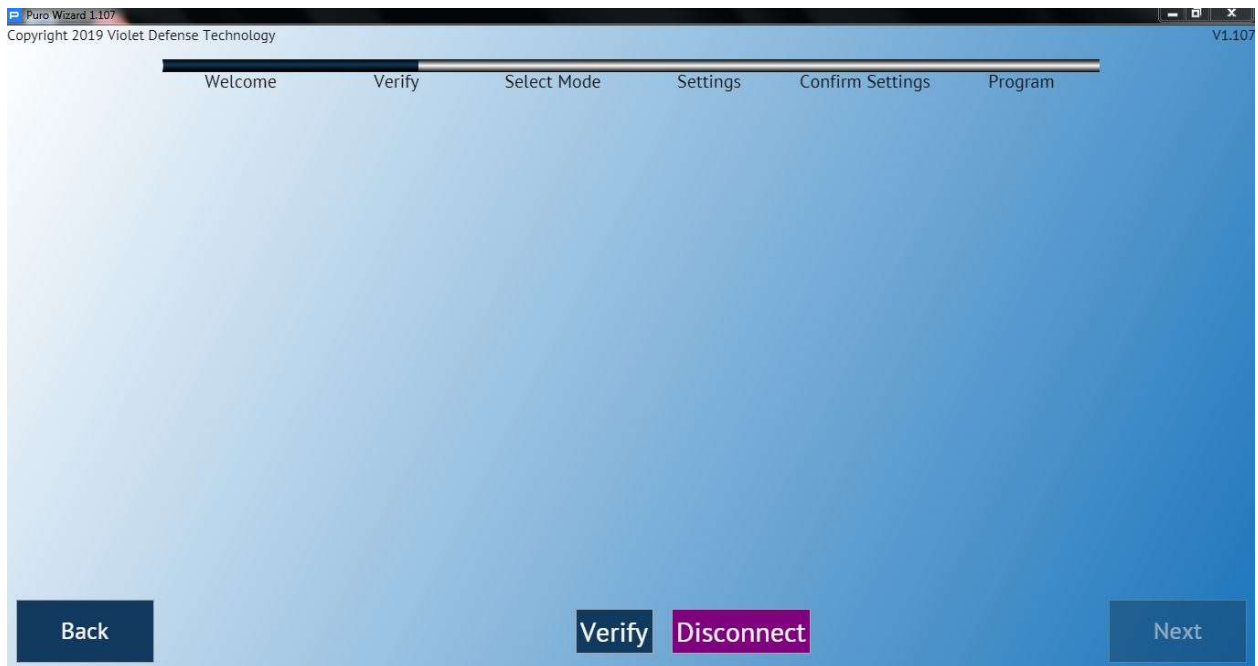
Upon opening the Puro program, you will see the welcome screen. Click on the Next button on the bottom right.



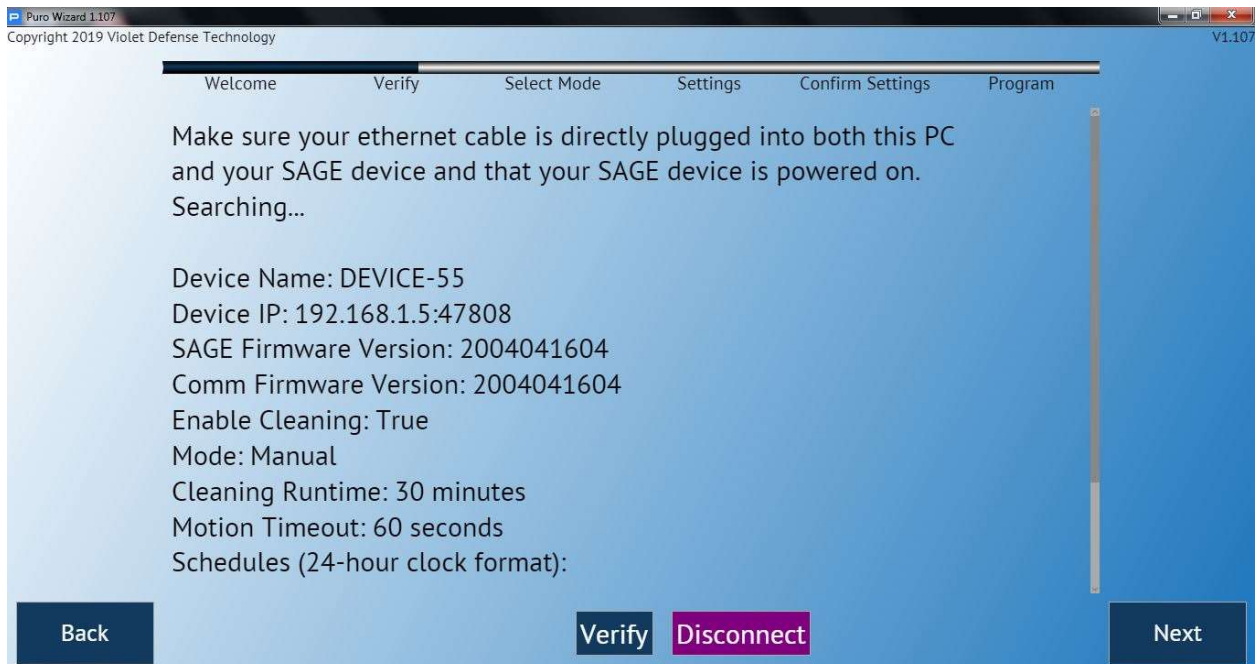
You will then be prompted to Connect to your unit by pressing on the Connect button at the bottom.



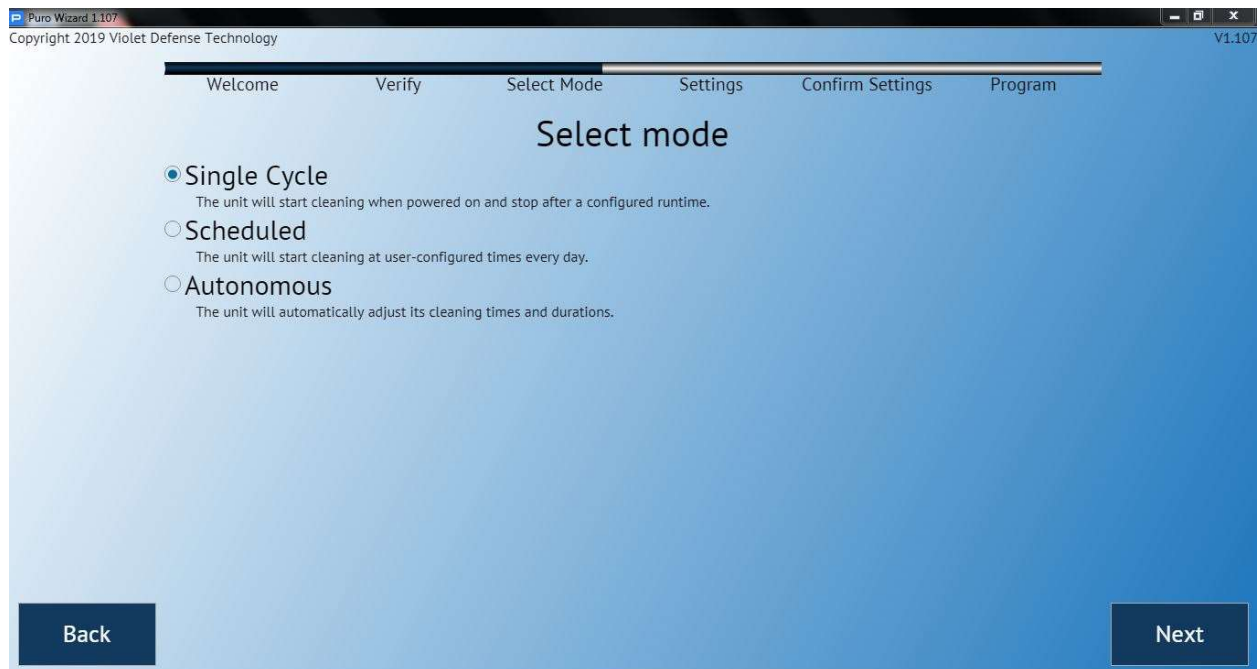
Click on the Verify button on the bottom to confirm connection with your Puro device.



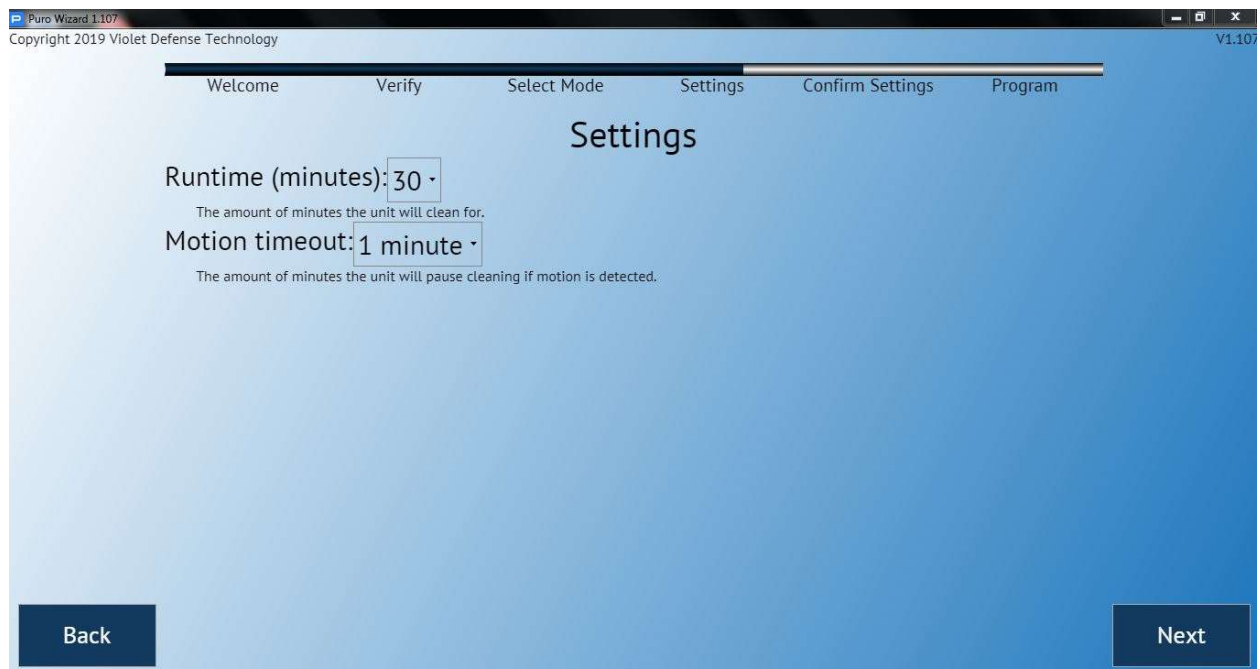
You should then see the page showing that you are connected to your Puro device. Click on the Next button on the bottom right.



Select your mode and click on Next.



First option is Single Cycle Mode – this option is for single uses of your Puro devices, meaning you will plug it in or turn the switch on each time you want it to run. You can choose between 15 and 30 minute cycles, and you can choose the time it take to start after detecting no motion. Click on Next to proceed.



Second option is Scheduled Mode. This is for devices that are staying plugged in and are to be run at certain times daily. You can select the length of the cycle and how long it takes to start after it stops

detecting motion. You can select up to 4 different times throughout the course of the day for the unit to run its cycle. When done, click on Next on the bottom right.

Puro Wizard 1.107
Copyright 2019 Violet Defense Technology V1.107

Welcome Verify Select Mode **Settings** Confirm Settings Program

Settings

Runtime (minutes): 30
The amount of minutes the unit will clean for.

Motion timeout: 1 minute
The amount of minutes the unit will pause cleaning if motion is detected.

☐ Start cleaning when powered on?
This is useful if you want to also be able to manually start a cleaning cycle by powering on the unit.

Number of schedules: 1
The unit will start cleaning at the specified times and run for the duration set as Runtime.

Start Time #1: 12 00 AM

Back Next

Then to finalize your settings from any of the modes you chose, click on the Program button on the bottom right. This will update the programming on your Puro device to the setting you just selected.

Puro Wizard 1.107
Copyright 2019 Violet Defense Technology V1.107

Welcome Verify Select Mode **Confirm Settings** Program

Confirm Settings

Mode: Scheduled
Standard Cleaning Cycle Runtime: 30 minutes.
Motion Timeout: 1 minute(s).
SAGE will not clean until scheduled time(s).
Schedule 1: 4:00 PM
Schedule 2: 2:30 AM
Schedule 3: 12:00 AM

Back Program

Your device is now programmed! You can Exit or Program Another device.

